



Rozelle residents and local business owners object to the proposed traffic changes at a hastily-convened protest last Thursday

Council secures injunction against RTA

Author: [Shant Fabricatorian](#)

Posted: Wednesday, 23 December 2009

Leichhardt Council has secured an injunction until January 8 against the RTA's plans to remove 15 car parking spaces on Darling Street.

The temporary injunction was awarded on December 16, in the Land and Environment Court. The RTA had been scheduled to commence work the following morning.

A spokesperson for the RTA, Mark Henderson, said Leichhardt Council had been informed of the changes at the Traffic Committee on November 5.

But this sparked an angry response from Acting Mayor Michele McKenzie. "They raised the matter verbally in General Business and said they would send a consultation letter," she said. "The expectation was that consultation would occur, not that the RTA would go ahead without further notice."

An email from the RTA to Leichhardt Council officers, seen by the *Independent*, said the work "does not require a Review of Environmental Factors".

But a response from Leichhardt Council stated it was "very concerned" about the "significant impact on the business adjacent and nearby to those parking spaces, to the value of those properties and the residents who use and rely on those businesses".

Mr Henderson said the changes were deemed necessary to improve traffic flow by reducing queuing across the intersection.

But Joseph Doueihy, of a local dry cleaning shop, said the RTA's proposal was ill-conceived and would cost jobs. "The RTA may think it's a small inconvenience, but these car spaces represent over 200 car and customer movements per day and are the lifeblood of the shops along that strip," he said. "Those customers that don't come to us won't go to cafés or restaurants either – it's going to have a roll-on effect."

Cr McKenzie agreed the changes would fundamentally alter the character of Rozelle. "You are going to lose the livelihood for 26 businesses and the quiet village life of Rozelle, because what you will have when you remove those car parking spaces is four lanes of fast-moving traffic, all day long, so no-one can cross the road," she said.

Local MP Verity Firth said she was concerned at the lack of consultation, but added that Leichhardt Council had not taken the time "to address the issue of parking and its impact on residents and businesses". She said removing some parking spaces could help to alleviate congestion and safety issues at the Victoria Road intersection.

Ms Firth said she had spoken with the Minister for Transport's office regarding the issue and had "represented all views to the Minister".

Inner West Courier

THURSDAY, MAY 27, 2010

innerwestcourier.com.au

INNER CITY EDITION

PHONE 9018 3500 \$1.20 INCL. GST

Memories of a life lived in the extremes

Visual vinyl

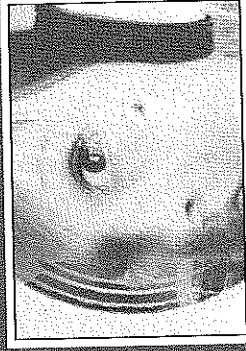
A footy feast



Picture: DANNY AARONS

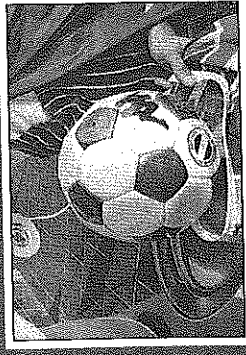
From the war-ravaged streets of Beirut to a comfortable life in Leichhardt, Abbas El-Zein has led a memorable life. No wonder then, his memoir has just won a \$20,000 literary prize.

■ Page 13



It's possible you'll never look at your old albums in the same way again, after seeing what's in this vinyl exhibition in Enmore.

■ Page 3



A feast of sport is coming with the World Cup. So why not a feast of food too? Two brothers are attempting to create a 32-course trip around the world.

■ Page 9

Tigers school land battle

Kate Carr

LEICHHARDT deputy mayor Michele McKenzie will not support any plans by Rozelle Public School to sell part of its land to Rozelle Village Pty Ltd to be used to build a pedestrian bridge.

The school is in negotiations over the land with the company behind the redevelopment of the Balmain Leagues Club, with an Education Department spokesman confirming that the outcome was still up in the air.

"Negotiations are ongoing," he told the *Courier*.

Cr McKenzie said she did not believe that public land should be sold to private developers.

In another sign that the council

is increasing its attempts to block the development, last Tuesday councillors unanimously resolved to spend \$70,000 on a new traffic study on the impact of the proposed development.

The study, which will be undertaken by Arup, includes two analyses. The first will establish a base case for traffic on Saturdays at a cost of \$14,800. The second, which will cost \$55,000, is a micro-simulation of traffic generated on Saturday mornings by the redevelopment of the leagues club as well as the old Multiplex site.

The council is paying \$10,000 and turning to US experts to get the study completed two weeks early. It will be ready by July 2.

■ To Page 4

Warehouse Sale

Open Every Wednesday - Saturday 10am-4pm

Wholesale direct to public
Top quality knitwear (Huge range of styles)

Genuine Sheep Skin made Ugg boots

From Size 8 - size 24

Australian pure wool

Wholesale prices! Less than 1/2 retail prices

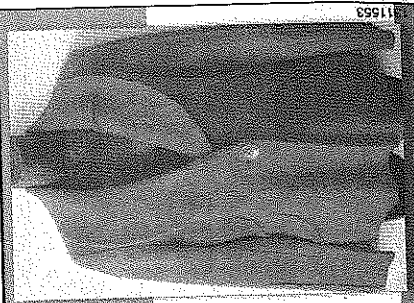


Unit 4, 168-180 Victoria Rd,

Marrickville

Phone: 8065 9442

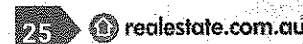
(Street parking available only)



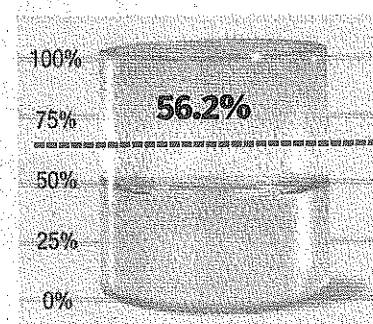
your Inner West Courier guide

Index

- 8 Police Beat
- 9 Inner West eye
- 14 Dateline
- 20 Opinion
- 22 Gigs
- 38 Sport
- 39 TV guide



Water



Today
Possible showers.

Top Temp: 21°C



Friday
Possible showers.
Top Temp: 20°C



Saturday
Possible showers.
Top Temp: 19°C



Sunday
Possible showers.
Top Temp: 19°C

Keep the count down



2008 **136** 2010
2009 **187** **184**

State road toll at 23/05/10 and at same week last year and at the end of last month in 2008
Source: RTA

STAY SAFE: MOBILE PHONES AND DRIVING

- It is illegal to drive or ride a vehicle while using a hand-held mobile phone. The penalty is a significant fine and three demerit points.
- This means that talking, sending or receiving text messages, playing games or taking photos are illegal when using a hand-held phone. It is also illegal to perform these activities when your vehicle is stopped but not parked, for example when you are waiting at traffic lights.
- A hands-free device can reduce the physical effort to make and receive calls but it doesn't necessarily make it safe to use a phone while driving.

Source: rta.nsw.gov.au

Editor: John Bilic Manager: Chris Florentzou Office: 181 First Ave, Five Dock, 2046 Phone: 9018 3500 Fax: 9018 3565 Deliveries: 9689 5498
Classifieds: 13 79 79 Email us: editor@innerwestcourier.com.au Circulation: 96,327 (CAB October 08 March 09) Readership of the Inner West Courier (Thursday edition): 122,000 (Roy Morgan readership survey September 2009) Your recycling of the Inner West Courier helps make Australia the world leader in newspaper recycling. More than 74.5% of Australia's newspapers are re-used.

The Inner West Courier (inner west edition) circulates in Annandale, Balmain, Balmain East, Birchgrove, Broadway, Camperdown, Dulwich Hill, Enmore, Forest Lodge, Glebe, Glebe Point, Leichhardt, Lewisham, Lilyfield, Marrickville, Marrickville South, Newtown, Petersham, Rozelle, St Peters, Stanmore, Sydenham, Tempe, Inner West Courier: Published by Cumberland Newspaper Group, a division of Nationwide News Pty Limited (ABN 98 008 438 828), 142 Macquarie St, Parramatta, NSW, 2150. Gloss printed at Hannanprint, Dobby St, Alexandria, 2015. Newsprint printed at Chullora Print Centre, Muir Rd, Chullora, 2190. Responsibility for election comment in this issue is taken by Bob Osburn, 142 Macquarie St, Parramatta, 2150.

Water harvest plan for park

SYDNEY Park's wetlands are set to get a whole lot wetter, with City of Sydney Council announcing it has begun building a \$1.3 million stormwater harvesting project which will funnel 51 million litres of water into the park.

The harvesting project will also treat the water gathered before it is released into the wetland.

Lord Mayor Clover Moore said the scheme will help to ensure the wetlands stay healthy.

"Water for the four wetlands currently comes from park runoff, which is not enough to replace the water lost through evaporation," Ms Moore said. "Reduced water levels can cause problems for aquatic

plants and animals such as frogs, fish and eels."

Currently untreated stormwater from streets carries plastic bags, detergents, nutrients and heavy metals directly to the Cooks River, via the Alexandra Canal, which takes stormwater from Alexandria, Darlinghurst, Erskineville, Eveleigh and Newtown.

Once the harvesting project is finished, this water will flow through a gross pollutant trap to where large pieces of rubbish will be captured, before running into a "bio-retention basin" consisting of soil and plants along the edge of the wetland which will also filter out pollutants.

Sydney Park currently loses more than 40 million litres of water annually to evaporation.

■ Kate Carr

Tigers traffic study

■ From Page 1

The study will be the third undertaken by the council. Cr McKenzie said it was needed because it would provide the most detailed study of the existing traffic environment.

Mark Wallis, from the Rozelle Resident Action Group which opposes the development, said he was thrilled the council had committed to taking another

look at the traffic situation. He said the previous study was flawed because it did not look at Saturday flows.

"It's obvious to anyone who lives in the area that peak flow is Saturday morning," he said.

Do you think the school should sell? Tell us at innerwestcourier.com.au

In White Bay there's a grow of hysteria...

Kate Carr

IT may not quite be a field of gold, but Sting's attempt to wander down to the concrete of White Bay for a concert has been met with a local chorus of dissent.

The 45,000-seat concert, being pushed by NSW State Development Minister Ian MacDonald, has been penciled in as Sydney's major New Year's eve event.

Balmain State Labor MP Verity Firth is appalled by the idea.

"A huge rock concert adjacent to homes is by no means compatible with our area, and I will be opposing it in the strongest possible terms," she said.

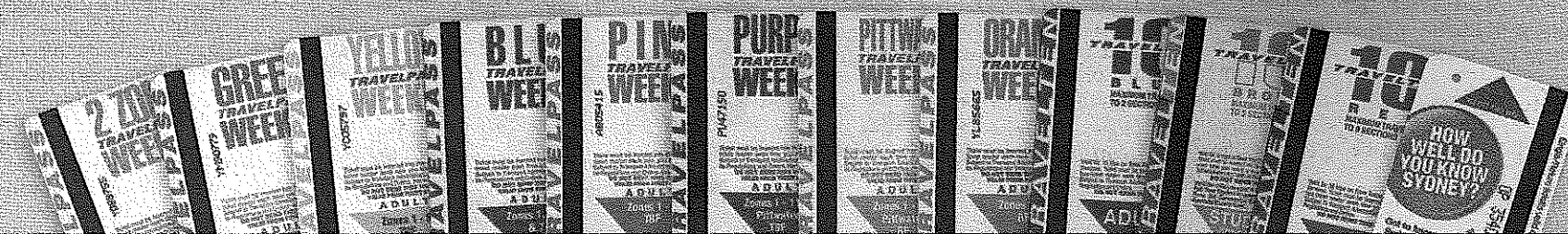
Ms Firth said she had not been consulted at all about the concert, and has launched an online petition against it at verityfirth.com

"I was unaware of any plans for a concert at White Bay until I read about it in the media," she said.

White Bay Precinct chairwoman Kath Hacking said she didn't think White Bay was the best location. "I think it is badly chosen," Ms Hacking, who tolerates rather than enjoys Sting's music, told the Courier. "I'm not against it but I don't think White Bay is the right place for it."

Leichhardt mayor Jamie Parker said council staff were looking into the concert to establish its "potential impacts and benefits".

Old-style bus and ferry tickets will no longer be valid after 30 June.



Buy direct from the factory outlet & save!



Ship Shape For Life

38 Queen Street Revesby | Ph 9792 1781

www.shipshapeforlife.com.au



MAYORAL MESSAGE

Dear Residents,

Leichhardt Council has called an urgent public meeting to discuss the announcement by the NSW Government before Christmas of the permanent relocation of the Cruise Passenger Terminal to White Bay Wharf 5.

In announcing the future plans for Barangaroo on 20 December 2009, the Premier and Minister for Ports and Waterways also announced that a permanent Cruise Passenger Terminal will be built at White Bay Wharf 5 with a secondary berthing capability at Wharf 4.

This ad hoc decision will have severe negative impacts on our community with a huge increase in traffic movements of passengers or bulk deliveries in and around residential areas and will cause even worse problems with parking around the site.

Council has written once again to the Member for Balmain, the Minister for Ports and Waterways and the Minister for Planning calling on the State Government to get on with the Master planning process for the Bays Precinct and place an immediate moratorium on any development approvals until this master planning process has been completed. In my letter, I also reiterated the need to ensure public access to the White Bay foreshores, reminded the State Government of the need to minimise potential noise and traffic impacts to the nearby residential area issues, and requested they consider more suitable locations particularly east of the Harbour Bridge to accommodate the ever increasing numbers and size of the cruise ships.

I urge everyone in the community to come to the public meeting to express your concerns about this announcement and support Council's campaign for a more strategic long term vision for the future of White Bay, not just quick fix options which will have a severe impact on the community.

CRUISE PASSENGER TERMINAL AT WHITE BAY PUBLIC MEETING THURSDAY, 28 JANUARY 6.30PM BALMAIN TOWN HALL

Cr Michele McKenzie, Acting Mayor

COUNCIL MEETING DATES

NOTICE IS HEREBY GIVEN OF THE FOLLOWING FORTHCOMING COUNCIL MEETINGS HELD AT LEICHHARDT TOWN HALL

107 NORTON STREET LEICHHARDT

Environment & Recreation Committee

6.30pm Wednesday 3 February 2010 Supper Room

Community Services, Safety & Facilities Committee

6.30pm Thursday 4 February 2010 Town Hall Conference Room

Building & Development Council Meeting

7.00pm Tuesday 9 February 2010 Council Chambers

Disability Access Committee

3.30pm Wednesday 10 February 2010 Supper Room

Bicycle Advisory Committee

6.30pm Wednesday 10 February 2010 Supper Room

Planning Committee

6.30pm Thursday 11 February 2010 Supper Room

Budget & Parking Management Taskforce

6.30pm Tuesday 16 February 2010 Leichhardt Town Hall

Leichhardt Aboriginal & Torres Strait Islander Consultative

6.00pm Wednesday 17 February 2010 Supper Room

Ordinary Meeting

7.00pm Tuesday 23 February 2010 Council Chambers

PUBLIC NOTICES

APPLICATIONS

Details of all applications currently on exhibition are available on Council's website at <http://www.leichhardt.nsw.gov.au/Applications-on-Exhibition.html>. If you do not have access to the internet please contact your local Council Precinct Committee, Library or Council's Customer Service Centre, on 9367 9222 for a current list of Applications on exhibition.

PUBLIC NOTICES

CONSENTS GRANTED BY COUNCIL BEFORE 28 JANUARY 2010

In accordance with s101 of the Environmental Planning and Assessments Act 1979 and Clause 124 of the Environmental Planning and Assessment Regulation 2000 the following development consents have been approved by Council before 28 January 2010. The development consents listed below are available for public inspection free of charge at the Council Administration Centre, 7-15 Wetherill Street, Leichhardt between the hours of 8.30am and 5.15pm Monday to Friday.

ADDRESS DETAILS OF APPLICATION

M - s96 Modification of Development Consent

LEICHHARDT M/2009/251 11 Foster Street

Section 96 application to modify D/2003/177 which approved alterations and additions to an existing single storey dwelling. Modifications include extension of deck by 800mm, new steps from deck, replace existing privacy screen to new screen to a height of 2 metres above deck and extend privacy screen by 3.6 metres.

DEVELOPMENT APPLICATION - D/2009/352 - BALMAIN LEAGUES CLUB

This application, which is not designated development, has been submitted for determination to Leichhardt Municipal Council. The application (plans & documents) may be inspected from 21 January 2010 to 1 March 2010 (public holidays excepted) at:

- the Administrative Centre, located at 7-15 Wetherill Street, Leichhardt, at any time between 8.30am and 5.15pm Monday to Friday (a scale model can also be viewed at this location);
- the Leichhardt Library, located at Piazza Level of the Italian Forum, 23 Norton Street, Leichhardt, at any time between 9.30am and 8.00pm Monday to Friday, 9.30am and 4.00pm Saturday and 10.00am and 4.00pm Sunday; and
- the Balmain Library at Balmain Town Hall, 370 Darling Street, Balmain, at any time between 9.30am and 5.30pm Monday, Thursday and Friday, 9.30am and 8.00pm Tuesday and Wednesday and 9.30am and 4pm Saturday, or via the link on Council's website.

The application may also be inspected on 30 January 2010 and 6, 13 and 20 February 2010 at: 697 Darling Street, Rozelle, between the hours of 9.00am and 4.00pm.

Public consultation meetings will be held on 1 February 2010 at Leichhardt Town Hall on the corner of Norton and Marion Streets, Leichhardt and on 3 February 2010 at Balmain Town Hall, 370 Darling Street, Balmain. Both these meetings will commence at 7.00pm.

During this period any person may make a submission in writing to Council in regard to the application. Where the submission objects to the application, the specific grounds for the objection should be clearly stated. It should be noted that submissions are not confidential and any submission may be viewed by the applicant. Submissions should be addressed to: Submissions@leic.ac.nsw.gov.au, or posted to P.O. Box 45, Leichhardt NSW 2040.

If you require further information or wish to discuss any aspect of the application with Council staff, please contact 9367 9065.

ADDRESS

138-152 & 154-156 Victoria Road ROZELLE, NSW, 2039

697 Darling Street, & 1, 3, 5, & 7 Waterloo Street,

ROZELLE, NSW, 2039

138-152 Victoria Road, ROZELLE, NSW, 2039

154-156 Victoria Road, ROZELLE, NSW, 2039

697 Darling Street, ROZELLE, NSW, 2039

1 Waterloo Street, ROZELLE, NSW, 2039

Car Park, 3 Waterloo Street, ROZELLE, NSW, 2039

Car Park, 5 Waterloo Street, ROZELLE, NSW, 2039

Car Park, 7 Waterloo Street, ROZELLE, NSW, 2039

(excepting 697 Darling Street, the above properties are also known as Balmain Leagues Club)

DETAILS OF APPLICATION

- Demolition of all existing buildings.
- Excavation to provide for six basement levels providing 594 car spaces, loading/unloading bays, speciality retail shops and a supermarket, accessed via Victoria Road and/or Waterloo Street.
- Construction of a public plaza level with pedestrian access via Waterloo Street, Darling Street and Victoria Road, containing speciality retail, commercial offices and a new club premises.
- Construction of new infill retail/commercial buildings on Darling Street.
- Construction of new two and three storey residential townhouses and apartments on Waterloo Street.
- Construction of three residential apartment buildings - Building A (located in southern part of site) proposed to be 13 storeys. Building B (located on western part of site) proposed to be six (6) storeys. Building C (located on northern side of site) proposed to be eight (8) storeys.
- Total number of dwellings proposed above is 136.
- Remediation of site.
- Construction of a pedestrian bridge across Victoria Road.

Please note: Due to the cost of works for this application being in excess of \$10 million the application is required to be determined by the Joint Regional Planning Panel, however all enquiries and submissions are to be referred to Leichhardt Municipal Council as per the details above.

PUBLIC NOTICE

EXHIBITION OF DRAFT PLANS OF MANAGEMENT FOR:

EASTON PARK, ROZELLE
WAR MEMORIAL PARK, LEICHHARDT
LAMBERT PARK, LEICHHARDT
PUNCH PARK, BALMAIN

At its Ordinary Council Meeting on 24 November 2009, Leichhardt Council resolved to publicly exhibit the Draft Plans of Management for the parks listed above.

These Draft Plans of Management have been prepared by Council in partnership with the community to enable it to manage, maintain and develop each of the parks over the next 10 - 15 years.

The Draft Plans of Management will be on public exhibition from Thursday 28th January 2010 until Friday 19th March 2010 and may be inspected at:

Council's website - www.leichhardt.nsw.gov.au

Cr Michele McKenzie, Acting Mayor

• Council's Citizen Service Centre - 7-15 Wetherill Street, Leichhardt

• Leichhardt Library - Piazza Level, Italian Forum, 23 Norton Street, Leichhardt

• Balmain Library - 370 Darling Street, Balmain

Written submissions in relation to one or more of the Draft Plans of Management are invited during the exhibition period and should be addressed to:

Senior Parks and Open Space Planner, Leichhardt Municipal Council, PO Box 45,

Leichhardt NSW 2040.

Alternatively submissions may be emailed to

recreation@lmc.nsw.gov.au

For all enquiries relating to this issue please contact Council's Senior Parks and Open Space Planner, Aaron Callaghan on 9367 9270 during normal business hours.

EXPRESSIONS OF INTEREST

2009/2010 COUNCIL'S COMMUNITY EVENTS SPONSORSHIP PROGRAM

ROUND 2

Expressions of interest are being called from local non profit community organisations/groups wishing to apply for funding from Council's Community Events Sponsorship Program for events to be held in the Municipality up until 30 June 2010.

For further information on Council's Community Events Program/Guidelines and to obtain an application form, please contact the Community Events Coordinator, Katie Bell on 9367 9359 or email, katieb@lmc.nsw.gov.au

Applications must be received at Council by Friday, 5 February 2010.

BUDGET & PARKING

MANAGEMENT TASKFORCE

Did you know that in October 2008 Leichhardt Council established the Budget and Parking Management Taskforce to give residents and businesses a better opportunity to understand and get involved with preparing the annual budget; and to discuss ideas about managing our parking issues for a more sustainable future?

The 1st meeting for 2010 is set for 6.30pm on Tuesday 16th February in the Leichhardt Town Hall - so come along and have a say on funding options for the 2010/2011 budget.

To register your interest and for further information including agendas and minutes of previous meetings visit Council's website at www.leichhardt.nsw.gov.au (your council meetings and agendas) or call Louise or Annalene on (02) 9367 9285.

YOUR PRECINCT, YOUR COMMITTEE, YOUR SAY

"MEET THE ANNANDALE WARD COUNCILLORS" & ANNUAL GENERAL MEETING

Monday, February 1, 2010

The Annandale Residents Precinct Committee allows residents in the area a chance to talk about the issues that concern them. It is also a forum for local community interaction with Leichhardt Council. It is organised by residents, and all Annandale residents are welcome to attend. The Annandale Residents Precinct Committee meets every first Monday of the month.

A meeting will be held on: **MONDAY, 1 FEBRUARY 2010 from 7.00pm to 8.30pm in ANNANDALE NEIGHBOURHOOD CENTRE, 78 Johnston St, Annandale.** Guest Speakers - Annandale Ward Councillors - Cr Lyndal Howison, Cr Daniel Kogoy & Cr Cassi Platte on Council's programs for 2010. Further, an Annual General Meeting will be held to elect Precinct executive positions. For any further information, please contact the Precinct Chairperson on 9818 3514.

SUMMER EXTENDED SWIM OPENING HOURS AT LPAC

Enjoy a swim until 8.30pm Monday to Friday

Extended hours operate until the end of March 2010.

For more information call 9555 8344 or visit

www.lpac.nsw.gov.au